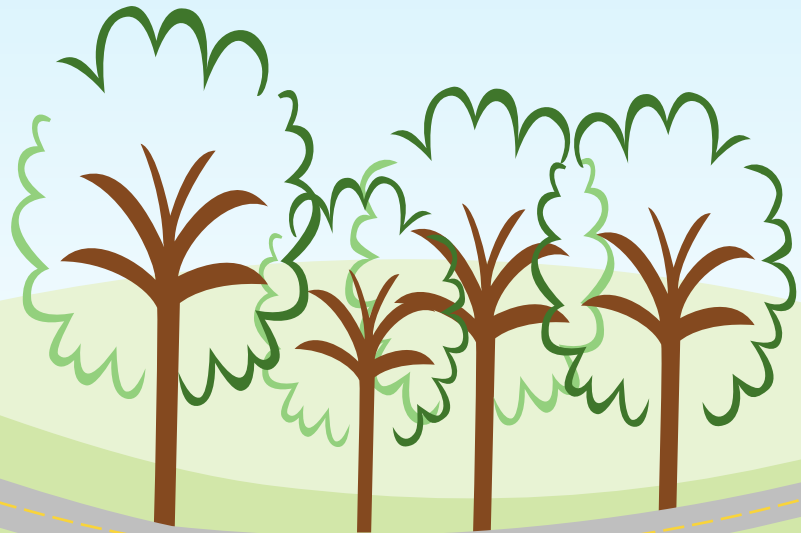




Haverford Civic Association

Annual Meeting



Welcome!

- Membership
- Connections to the Township, other Civics, and the Federation of Civics
- Updates:
 - www.haverfordcivicassociation.com
 - www.facebook.com/haverfordcivicassociation



BECOME A MEMBER! JOIN BY PAYPAL!
www.haverfordcivicassociation.com/join

Agenda

- Welcome
- Business:
 - Snowflakes
 - Haverford Station
 - Neighborhood Events
 - Elections
- Program:
 - John Schwarz,
Bryn Mawr Hospital
 - Commissioners
 - Narberth Ambulance

Snowflakes on Lancaster Avenue



- Cost shared with Lower Merion Township
- Our portion comes from member dues
- Upgraded last year to LED

Haverford Station

- Available for lease from Amtrak
- Historic District contributing resource



Neighborhood Events in Sharpe Park

- Events
 - Neighbors' Night Out
 - Art in Sharpe Park
- Scheduling: Weeknight? Saturday afternoon?



Elections – to serve 2023

- Information provided via email
- No additional candidate names received by the Secretary by the 5-day suspense
- Any nominations from the floor?
- All members who are CURRENT (paid) for 2022 or pre-paid for 2023 may vote

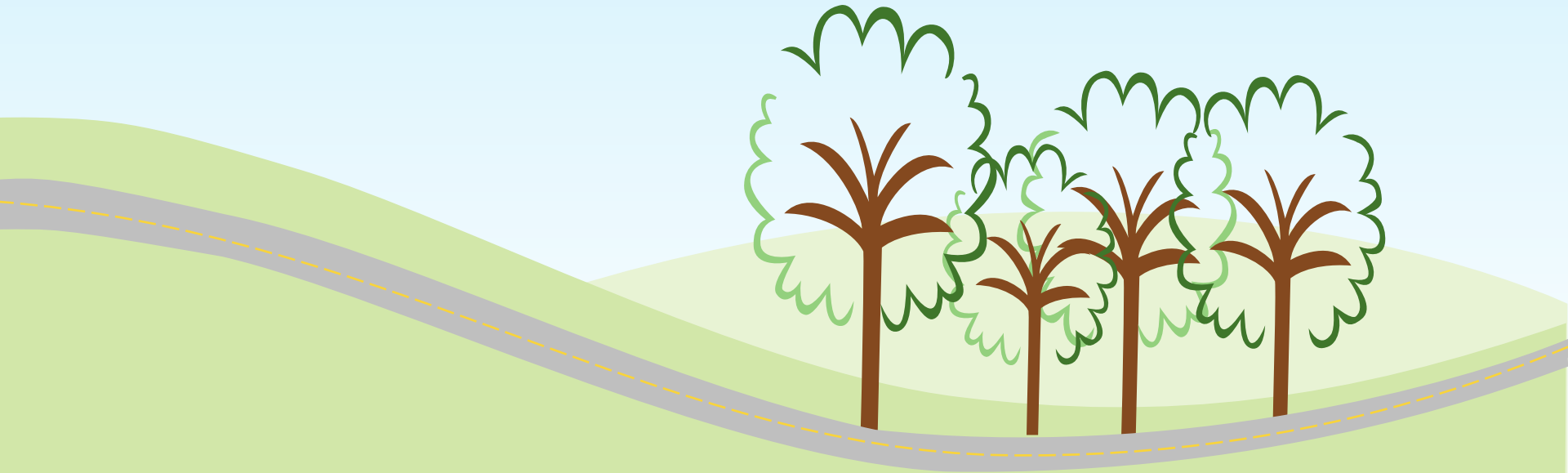
BECOME A MEMBER! JOIN BY PAYPAL!

www.haverfordcivicassociation.com/join

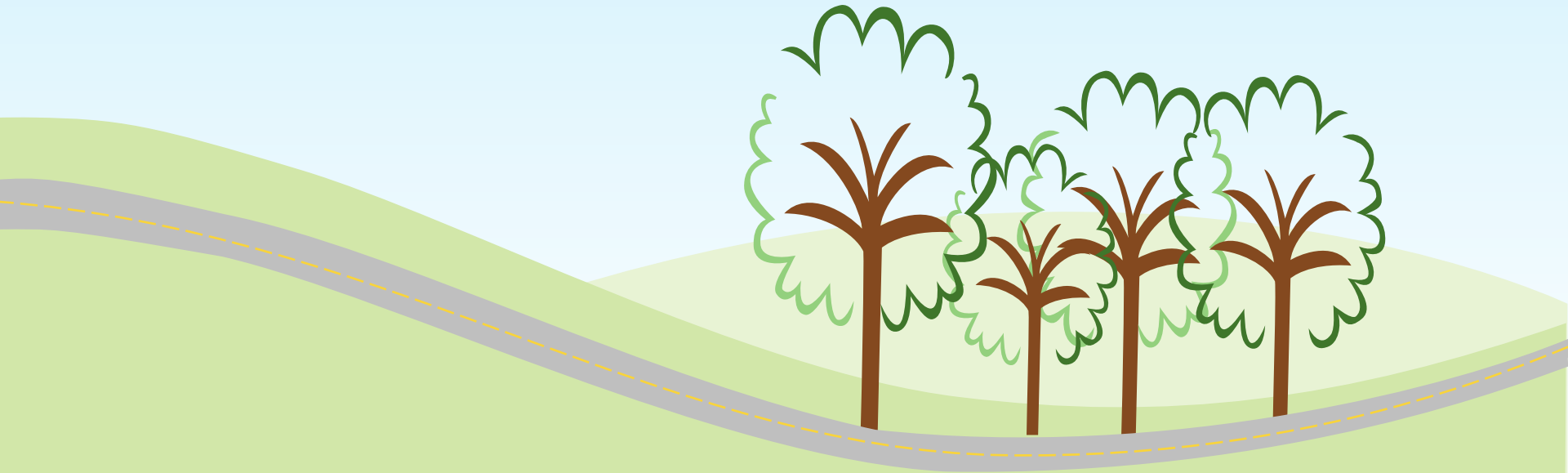
Nominees – Officers

- Mo Gillen President
- Hala Imms First Vice President
- John McIntyre Second Vice President
- Anne Mezey Secretary
- Lee Tabas Treasurer
- Andy Orr Website Support

VOTE



PROGRAM





Main Line Health[®]

**Bryn Mawr Hospital
Foundation**

Bryn Mawr Hospital Updates

January 10, 2023

John Schwarz
President, Bryn Mawr Hospital

Acute Care Hospitals

Bryn Mawr Hospital
Lankenau Medical Center
Paoli Hospital
Riddle Hospital



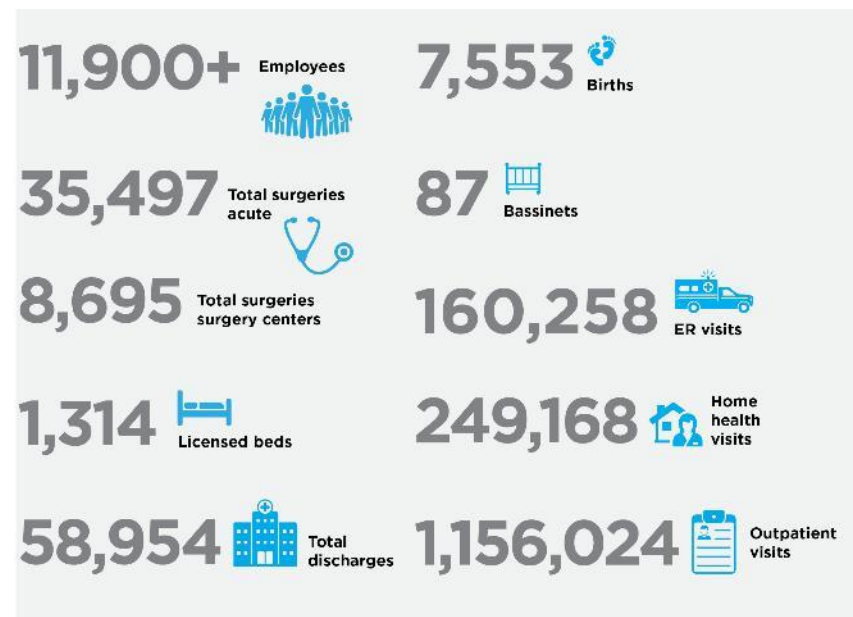
Rehabilitation Facility

Bryn Mawr Rehab Hospital



Outpatient Centers & Urgent Care

Broomall
Collegeville
Concordville
Exton Square
King of Prussia
Newtown Square
Wynnewood



Mirmont Treatment Center - Drug & Alcohol Addiction Treatment Facility

HomeCare & Hospice – Home-based health services & products

Main Line HealthCare – Employed physician network

Lankenau Institute for Medical Research – biomedical research facility



Main Line Health
Well ahead.™

269 Inpatient beds + 15 Observation beds = 284 total licensed

16,000+ Discharges

46,000+ ED visits

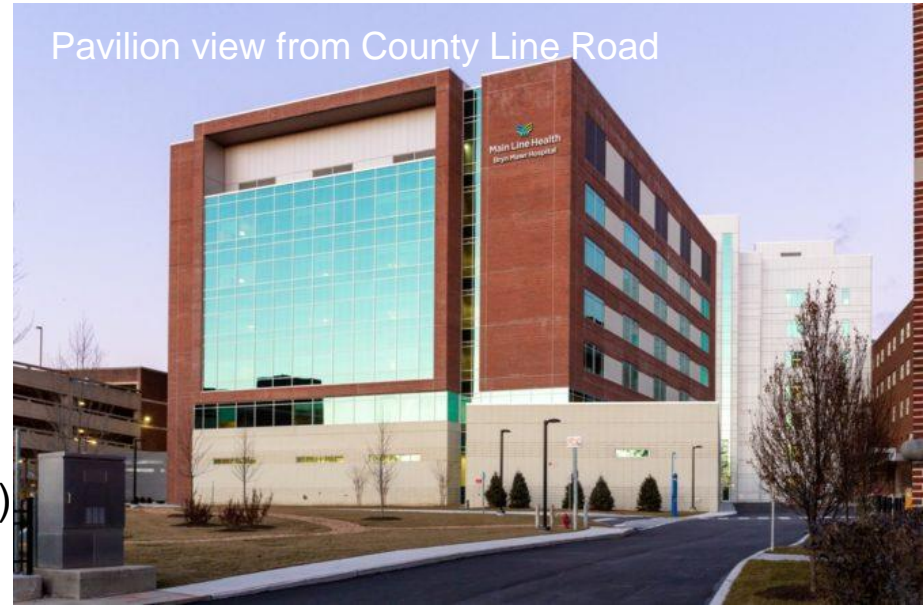
~2,000+ Births

1,400 Staff



- Opened in 2019
- \$253M, 257,000 sq. ft. building
- Houses:
 - Surgical Suite with 12 ORs
 - Labor & Delivery
 - Level III NICU (Neonatal Intensive Care Unit)
 - Maternity Unit
 - Intensive Care Unit
 - 2 floors of medical/surgical inpatient beds

Pavilion view from County Line Road



New Inpatient Psychiatry Unit – Opened 3/22



40 private patient rooms with bathroom

Ample group therapy & multipurpose spaces

Large open areas for social activities & visitation

Exercise facilities

Dedicated quiet/meditation rooms

Consultation & treatment planning rooms

Physician, nursing & social work offices and workstations

Dining rooms & staff lounges

A healing atmosphere with circadian lighting, piped ambient music, noise cancelling features

Safety features throughout



King of Prussia:

- partial hospitalization program
- intensive outpatient program
- outpatient individual therapy
- Nest Program
- outpatient psychotherapy groups

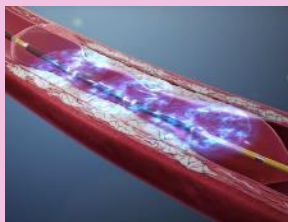


Cardiovascular & Neurointerventional Services



Cardiac Catheterization Procedures

- ~1,400 cases/year
- Heart attacks & cardiovascular disease
- Shockwave



Electrophysiology Procedures

- ~1,200 cases/year
- Heart rhythm disorders
- WATCHMAN



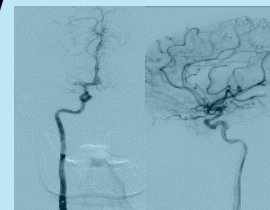
Peripheral Procedures

- ~700 cases/year
- Peripheral vascular/arterial disease
- Shockwave



Neurointerventional Procedures

- ~400 cases/year
- Stroke intervention
- Thrombectomy
- Aneurysm







Maternity & Neonatal Care



Emergency & Inpatient Pediatrics



Orthopedic Surgery



Bariatric & Weight Loss Surgery



Minimally Invasive & Robotic Surgery



Barbara Brodsky Comprehensive Breast Center



Robotic Prostatectomies

Urology
General Surgery
Obstetrics /
Gynecology
Podiatry
Family Medicine
Orthopedics

Gastroenterology Fellows
Breast Oncology Fellows

Sharpe-Strumia
Research
Foundation



COVID-19 Dashboard as of 1/6/23

MLH Total

Current Inpatients

81 COVID+ (**8** Breakthrough)

Inpatient Admissions

18.00 3-Day Avg

4 Today **15** Yesterday **13,589** Total

Inpatient Discharges

17.33 3-Day Avg

6 Today **20** Yesterday **11,421** Total

Hospital Census

90.9% Total Bed Usage (780/858)

Critical Care

88.7% Bed Usage (197/222)

13 COVID+ (**0** Breakthrough)

10 Critical Care Off Isolation

Ventilators

1 COVID+ (**0** Breakthrough)

COVID+ Deaths

1,678 Total (**65** Breakthrough)

0 Yesterday (**0** Breakthrough)

Bryn Mawr Hospital

Current Inpatients

17 COVID+ (**1** Breakthrough)

Inpatient Admissions

3.67 3-Day Avg

0 Today **2** Yesterday **2,918** Total

Inpatient Discharges

5.67 3-Day Avg

1 Today **6** Yesterday **2,423** Total

Hospital Census

86.7% Total Bed Usage (202/233)

Critical Care

96.9% Bed Usage (31/32)

2 COVID+ (**0** Breakthrough)

0 Critical Care Off Isolation

Ventilators

1 COVID+ (**0** Breakthrough)

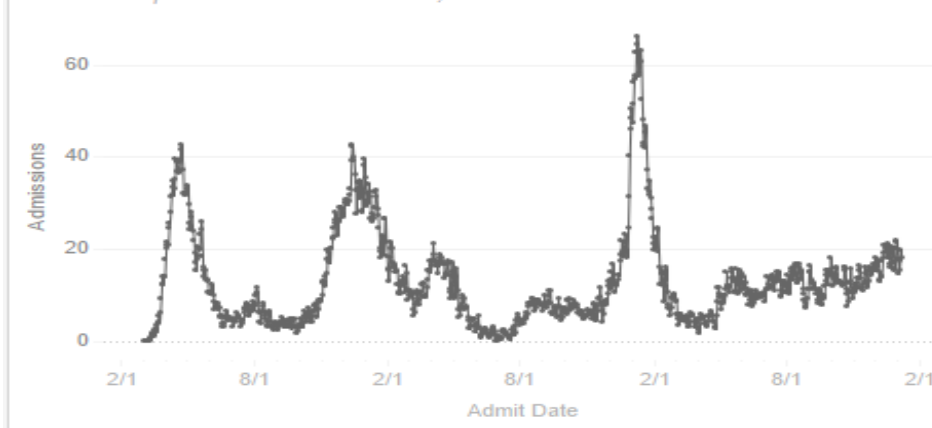
COVID+ Deaths

368 Total (**21** Breakthrough)

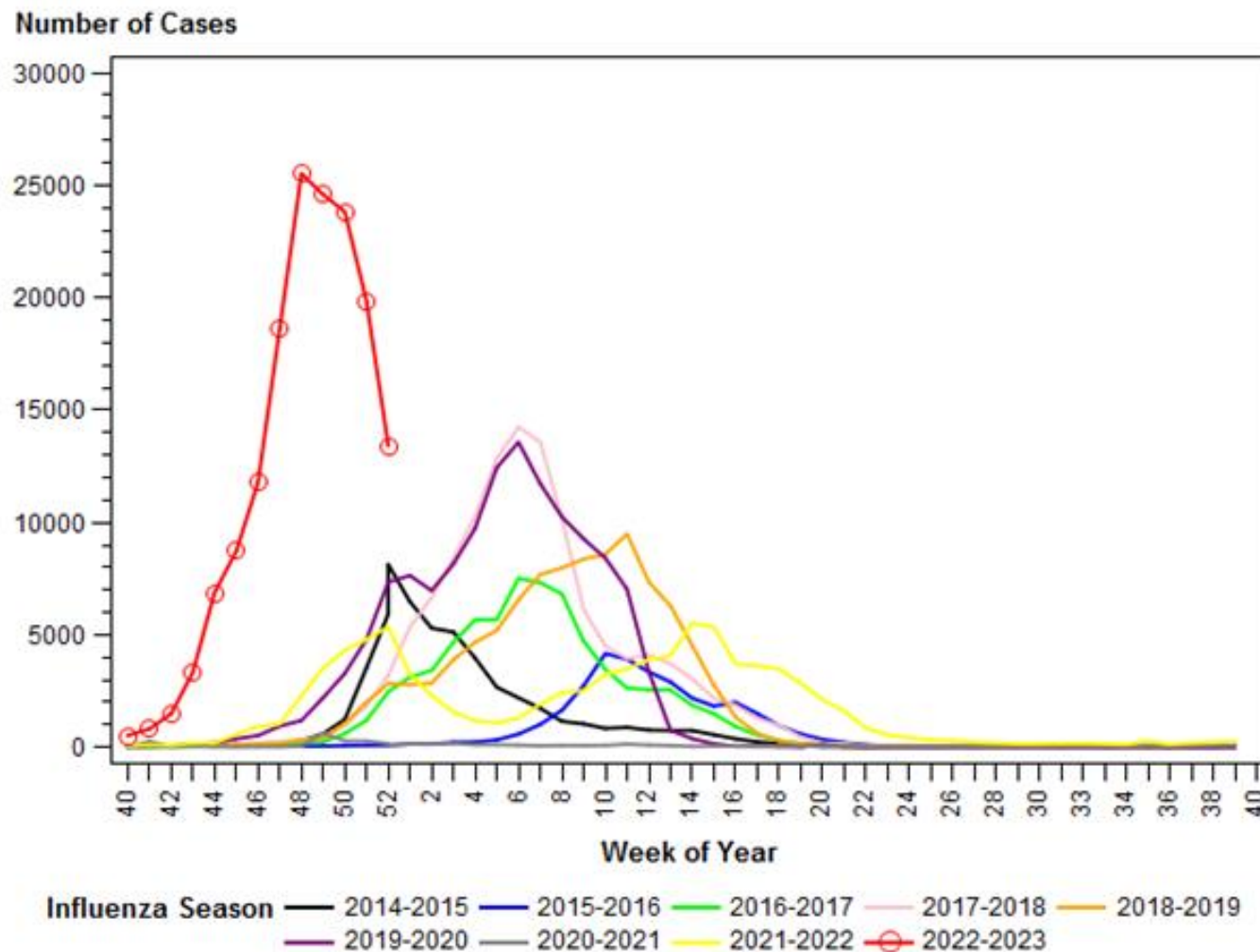
0 Yesterday (**0** Breakthrough)

Admissions by Admit Date (rolling 3-day avg)

Includes: Inpatient and Observation, Covid+



Influenza – week ending 12/31/22



Source: PA Dept of Health



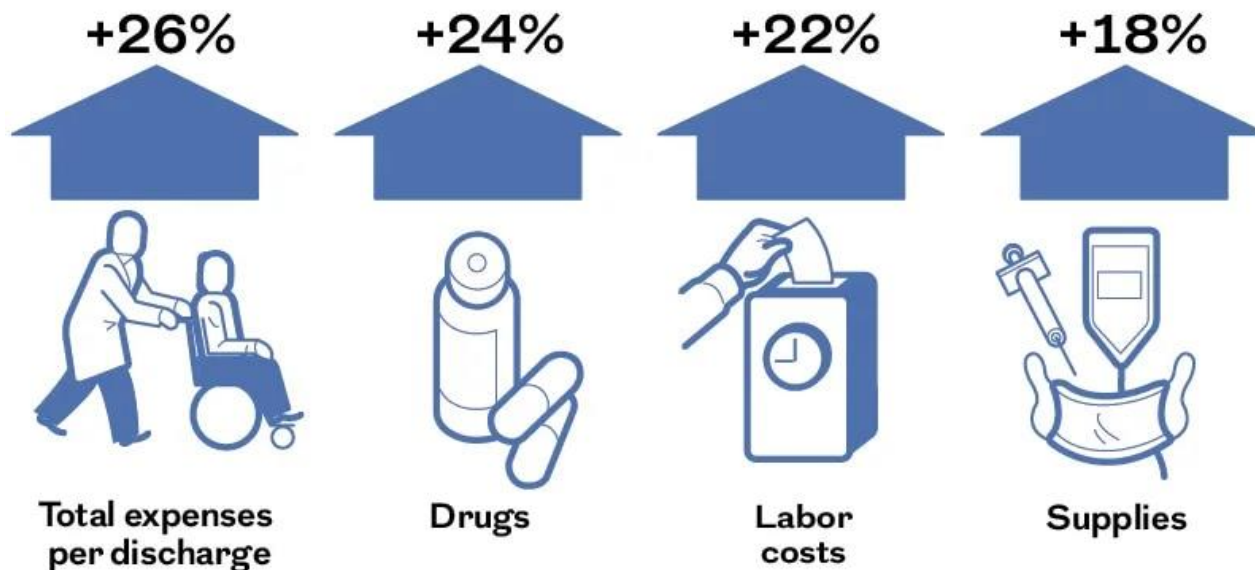
Main Line Health
Well ahead.®

Hospital Revenues Not Keeping Up With Expenses

Hospital systems in Southeastern Pennsylvania are reporting large and widespread losses. Main Line Health, for example, expects to lose \$60 million for the year that started July. Through October, the organization already had a loss of \$62 million.

Expenses

Expenses across the Main Line Health hospital system saw significant increases in July, August, and September, compared with the same three months in 2021 . . .



Source: Main Line Health

Revenue

. . . while revenue increased only slightly over the same time period.



Steve Madden / Staff Artist

Source: Philadelphia Inquirer – 12/12/22



Main Line Health
Well ahead.®

John T. Schwarz, *President, Bryn Mawr Hospital*

484-337-3570

schwarzj@mlhs.org

Margaret Stevens, *Manager, Community Health & Outreach*

484-337-5205

stevensm@mlhs.org

Bryn Mawr Hospital Patient/Guest Relations

484-337-3075





Questions?

Our Commissioners

Anthony Stevenson

Ward 4 –
Ardmore &
Haverford



Ray Courtney

Ward 5 -
North Ardmore &
Wynnewood



Scott Zelov

Ward 10 -
Bryn Mawr, Haverford,
& Gladwyne



PUT YOUR QUESTIONS IN THE CHAT BOX

Commissioner Discussion

- Ardmore Master Plan
- American Rescue Plan (ARP)
- Housing Affordability
- Township Advisory Board Nominations
- Ward Redistricting

Anthony Stevenson

Ward 4 –
Ardmore &
Haverford



astevenson@lowermerion.org

Commissioner Discussion

- Sustainability
- Stormwater Management
- Intergovernmental Relations

Ray Courtney

Ward 5 -
North Ardmore &
Wynnewood



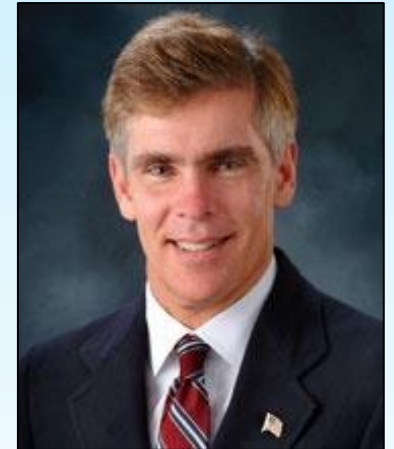
rcourtney@lowermerion.org

Commissioner Discussion

- Township Finances
- Fire & Police
- Billboards

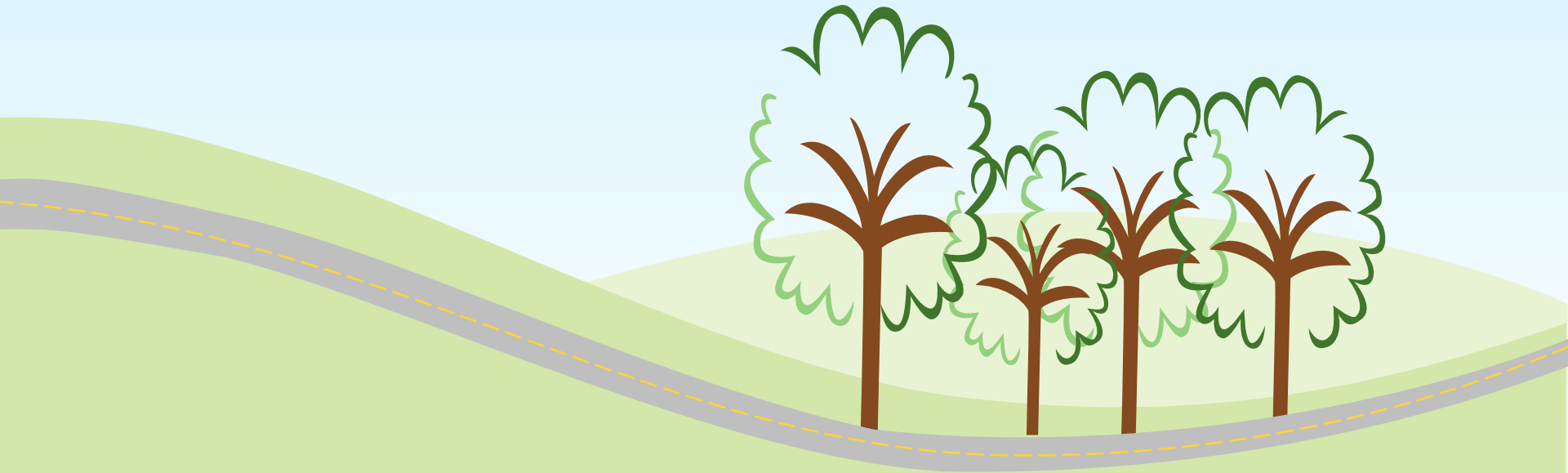
Scott Zelov

Ward 10 -
Bryn Mawr, Haverford,
& Gladwyne



vscottzelov@lowermerion.org

Questions?





COUNTLESS LIVES SAVED

Serving Our Communities Since 1944

NARBERTH AMBULANCE

Exclusive 911 provider for Lower Merion, Haverford,
Narberth, Conshohocken and West Conshohocken

Your Local 9-1-1
EMERGENCY MEDICAL SERVICES



HISTORY THEN & NOW 1944

NARBERTH AMBULANCE THEN Narberth Residents



In the wake of WWII, Narberth residents founded Narberth Ambulance in 1944 with the goal of providing first aid and non-emergency transports for those involved in the war and entering the ports of Philadelphia. In addition, we provided care for local residents in the event of an attack. Over the years, the company grew to eventually become the provider of emergency medical services to all of Lower Merion Township. By 1981, advanced life support service and trained paramedics were available for dispatch during emergencies. In 1999, Pleasant Valley Ambulance of Conshohocken was integrated into Narberth Ambulance, expanding the service area into Conshohocken and West Conshohocken. Most recently, in 2017 we were welcomed into Haverford Township as the 911 EMS provider for this neighboring community.

2022

MISSION STATEMENT

The mission of Narberth Ambulance is to provide high quality pre-hospital care and medical transportation to the communities we serve. We recognize that each patient has individual healthcare needs and believe it is our responsibility to treat them with compassion and dignity. We strive at all times to foster a collaborative, supportive and respectful environment for our career and volunteer staff, as well as the agencies with which we interact.

ORGANIZATION OVERVIEW

Narberth Ambulance is a 501(c)(3) non-profit organization that serves five Montgomery and Delaware County municipalities with professional 9-1-1 emergency medical response and advanced life support services. We operate from four stations and are equipped with nine ambulances, 2 officer response vehicles, one physician responder, and one mass casualty unit.

**NARBERTH
AMBULANCE NOW**



As has been our tradition from the start, we still rely on dedicated volunteers to carry out our mission. Today, Narberth Ambulance is governed by a ten-person volunteer Board of Directors including a Medical Director and Chief of Operations. Day-to-day operations are carried out by over 140 dedicated volunteers and career medical professionals along with our in-house administrative team.

SERVICES

Services we provide to those in our coverage area include:

- 911 emergency response
- Mass casualty and natural disaster response
- Community safety and preparedness training
- Medical standbys for community events, festivals and sports
- CPR, first aid and bleeding control classes
- AED sales and maintenance
- Medical support to the police and fire departments
- Volunteer community service programs -
come volunteer with us!



IN THE COMMUNITY

Narberth Ambulance team members donate thousands of volunteer hours in the community each year. Volunteer service projects include an annual food drive, blood pressure screenings,

FAST FACTS

Our Service Area Covers:

People

150,000
Residents



14 Senior Care Facilities

Community Centers

56

Houses of
Worship

93

Child Care &
Grade Schools

7

Colleges &
Universities

9

High
Schools

OUR SERVICE AREA

Our name may be Narberth Ambulance, but we respond to 10,000 calls annually for all types of medical emergencies across 35 square miles of Montgomery and Delaware Counties.



SUPPORT NARBERTH AMBULANCE

\$40,000

Cardiac Monitor
and Defibrillator

\$34,000

Patient Stretcher
& Lift System

\$1,000

Airway Suction
Machine

\$6,500

Paramedic Training
Program for One Person



\$225,000

Ambulance without
Equipment

\$54,000

Training our Personnel
Year Round

\$13,000

Endotracheal Video
Laryngoscope

SUPPORT NARBERTH AMBULANCE

Subscribe
to our
mailing list

Follow
us
on social
media

Join
our annual
Membership
Drive

Invest
in Narberth
Ambulance &
public safety

THANK YOU!

Narberth Ambulance
101 Sibley Ave
Ardmore, PA 19003
NarberthAmbulance.org

*Jeanine DiTomasso Chief
Philanthropy Officer
JDiTomasso@NarberthAmbulance.org
Cell: 213-713-4495*



REMINDER: Become a member of Haverford Civic Association

KEEP THE SNOWFLAKE LIGHTS ON!

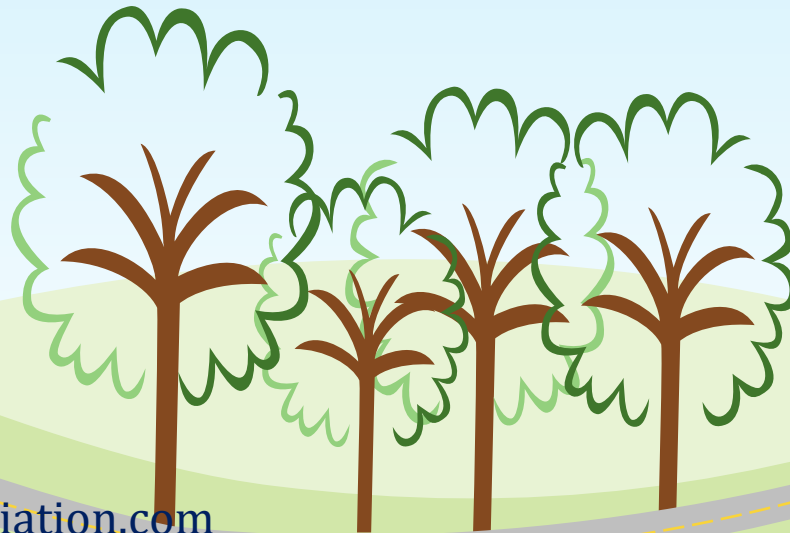


BECOME A MEMBER!

www.haverfordcivicassociation.com/join

THANKS

for joining us!



Learn more:

www.haverfordcivicasassociation.com

Contact us:

haverfordcivicasassociation@gmail.com